

LED CANOPY LIGHT SCOTTSDALE® - LEGACY™ RECESSED SUPERKIT – (CRUSK RECU SCDL)



Recessed Housing Not Included



US & Int'l. patents pending.

Crossover SuperKits allow you replace many existing recessed canopy fixtures (including LSI, Whiteway and Jet-Phillips) without having to know the dimensions of the existing fixture.

HOUSING - Low profile, durable die-cast, aluminum construction, providing a reliable weather-tight seal.

LEDs - Features an array of select, mid-power, high brightness, high efficiency LED chips; 5300°K color temperature, 70 CRI (nominal).

DRIVE CURRENT - Choice of Low Wattage (LW) or Super Saver (SS).

OPTICS / DISTRIBUTION - Symmetrical, which directs light through a dropped, borosilicate, prismatic glass lens, to provide a uniform distribution of light to vertical and horizontal surfaces.

OPTICAL UNIT - Features an ultra-slim 1" profile die cast housing, with a dropped glass lens. Unit is water-resistant, sealed to an IP67 rating. Integral designed heat sink does not trap dirt and grime, ensuring cool running performance over the life of the fixture.

PRESSURE STABILIZING VENT - Luminaire assembly incorporates a pressure stabilizing vent breather to prevent seal fatigue and failure.

DRIVER - State-of-the-art driver technology superior energy-efficiency and optimum light output. Driver components are fully encased in potting for moisture resistance. Complies with IEC and FCC standards.

ADAPTOR PANEL - Die formed galvanized steel, with powder coat finish.

OPERATING TEMPERATURE - -40°C to 50°C (-40°F to +122°F)

ELECTRICAL - Universal voltage power supply, 120-277 VAC, 50/60 HZ input. Drivers feature two-stage surge protection (including separate surge protection built into electronic driver) meets IEEE C62.41.2-2002, Scenario 1, Location Category C.

FINISH - Standard color is white and is finished with LSI's DuraGrip polyester powder coat process. DuraGrip withstands extreme weather changes without cracking or peeling.

INSTALLATION - Tether holds pre-assembled optical unit and mounting panel hinges during wiring for one-man installation. Driver is pre-mounted to back of CRUSK assembly.

SHIPPING WEIGHT - 24 pounds.

EXPECTED LIFE - Minimum 60,000 to 100,000 hours depending upon the ambient temperature of the installation location. See LSI web site for specific guidance.

WARRANTY - Limited 5-year warranty.

LISTING - UL listed to UL 1598, UL 8750 and other U.S. and International safety standards. Suitable for wet locations.

PHOTOMETRICS - Applications layouts are available upon request. Contact LSI Petroleum Lighting or petroleum.apps@lsi-industries.com

This product, or selected versions of this product, meet the standards listed below. Please consult factory for your specific requirements.



IP67



Project Name _____ Fixture Type _____
Catalog # _____

03/19/14
© 2013
LSI INDUSTRIES INC.

LED CANOPY LIGHT SCOTTSDALE® - LEGACY™ RECESSED SUPERKIT – (CRUSK RECU SCDL)

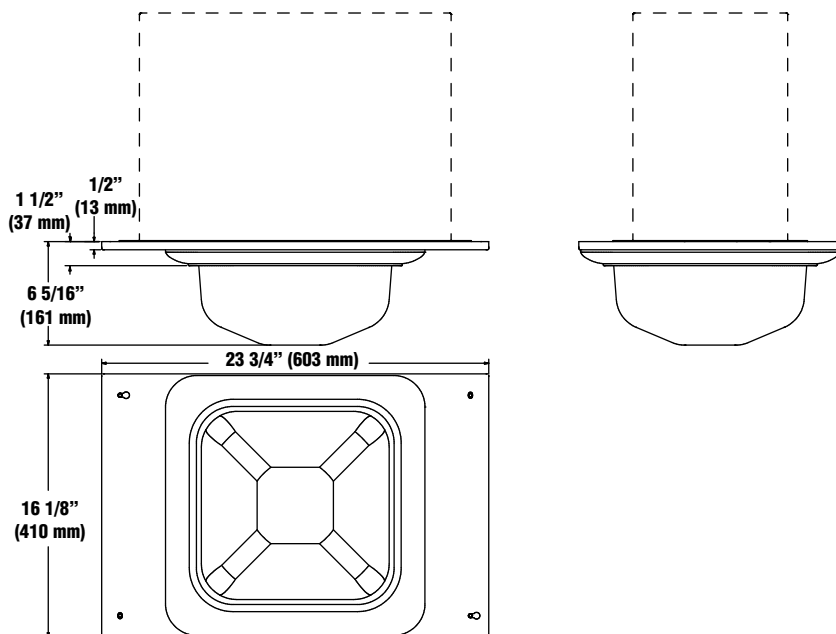


LUMINAIRE ORDERING INFORMATION

TYPICAL ORDER EXAMPLE:	CRUSK RECU SCDL LED SS CW UE WHT
------------------------	---

Prefix	Distribution	Light Source	Drive Current	Color Temperature	Input Voltage	Finish	Options
CRUSK RECU (Recessed)	SCDL - Scottsdale Drop Lens	LED	LW - Low Watt SS - Super Saver	CW - Cool White	UE - Universal Voltage (120-277V)	WHT - White BRZ - Bronze BLK - Black	None

DIMENSIONS



LIGHT OUTPUT - CRUSK RECU SCDL				
		Lumens	Watts	LPW
Cool White	LW - Low Watt	9,450	85	111
	SS - Super Saver	12,195	114	107