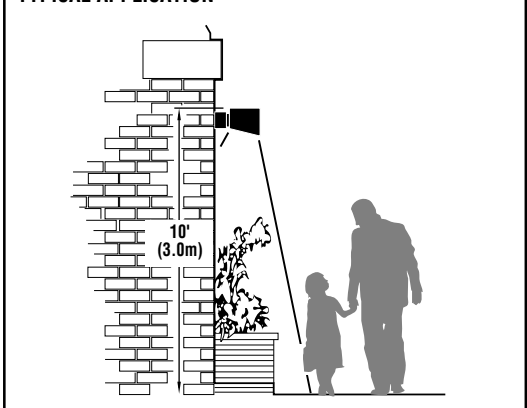


LINEAR LED WALL WASH - LWW



TYPICAL APPLICATION



U.S. and international patents pending

APPLICATION - A highly efficient and dramatic means of wall illumination, designed for seamless continuous row mounting on an exterior wall. This wall wash system adds brilliant LED performance to new installations or can drastically enhance an existing structure as a fluorescent replacement wall wash retrofit system. Optimal performance can be achieved at mounting heights of 10 to 12 ft. above finished floor.

LEDS - High Lux LEDs that produce approximately 260 lumens at 3.5 watts per foot in Cool White (5100°K nominal), Neutral White (4100°K nominal) and Bright White (6500° K nominal) color temperature. Lumen output and wattage may vary depending upon run length, power supply and LED Kelvin temperature. 70 CRI (nominal).

OPTICS - High efficiency, die formed, one piece reflectors provide a smooth and brilliant Asymmetrical distribution along with even vertical illumination to enhance the structure face and create brilliant depth from the road. Incremental optional lengths are designed to seamlessly cover the facade in a continuous row application. Luminaire is rated full cutoff.

HOUSING - Die formed, non-corrosive aluminum, painted after fabrication with several powder coat finish options.

POWER SUPPLY - 75w/120v 60Hz input / 60 watt 12VDC output power supplies constant current and is potted for use in damp locations. Other input voltages and frequencies are available, please consult the factory for details.

OPERATING TEMPERATURE - -40°C to +50°C (-40°F to +122°F)

INSTALLATION - Installs in continuous row applications designed to wash light down building walls.

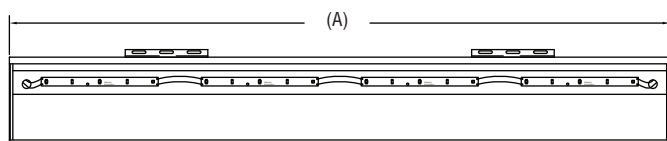
EXPECTED LIFE - Minimum 60,000 hours to 100,000 hours depending upon the ambient temperature of the installation location. See LSI web site for specific guidance.

WARRANTY - Limited 5-year warranty.

LISTING - UL Listed Wet location

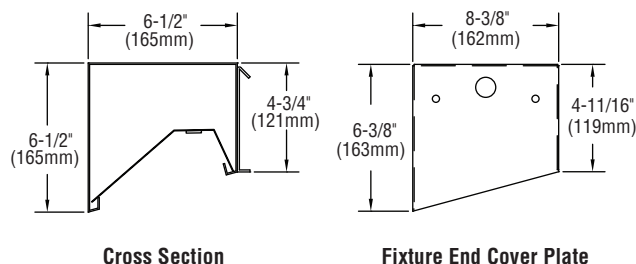
PHOTOMETRICS - Application layouts are available upon request. Contact LSI Applications Group at lighting.apps@lsi-industries.com

DIMENSIONS



Description	Dim "A"
4' housing	48" / 1220mm
6' housing	72" / 1829mm
8' housing	96" / 2439mm

Dimensions above are for determining overall length of individual sections. Specify total linear run length per individual straight run to insure proper power supply requirements. Standard maximum length of a single unit is 8 feet. All other specified lengths are combinations of 8 feet and below.



LINEAR LED WALL WASH - LWW

LUMINAIRE ORDERING INFORMATION

TYPICAL ORDER EXAMPLE: **LWW 8 LED CW BLK 120**

Prefix	Total Linear Length Required (ft.)	Light Source	LED Color	Finish¹	Input Voltage
LWW	4 - 4ft 12- 12ft 6 - 6ft 14 - 14ft 8 - 8ft 16- 16ft 10- 10ft	LED - Light Emitting Diode	CW – Cool White NW – Neutral White BW – Bright White	BRZ - Bronze BLK - Black PLP - Platinum Plus WHT - White GPT - Graphite MSV - Metallic Silver SVG - Satin Verde Green	120²

NOTE:

- 1- Special RAL colors are available, consult factory for details
- 2- Consult factory for other input voltage options
- 3- Items listed are painted white - consult factory for optional paint finishes

ACCESSORY ORDERING INFORMATION (Accessories are field installed)	
Description	Order Number
Left Hand Straight Extension (4" to 12")*	43296CLR
Right Hand Straight Extension (4" to 12")*	43297CLR
End Cap	43128CLR
*Can be field cut to allow less than 4" dimension. NOTE: CLR- Specify finish. Must be same as luminaire.	

OPTIONAL FLUSH MOUNT BRACKETS (Accessories are field installed)		
Total Component Length	Brackets Required	Order Number³
4'	(1) 48"	48" - 539701
6'	(1) 72"	72" - 539702
8'	(1) 96"	96" - 539703
10'	(1) 48" and (1) 72"	
12'	(1) 72" and (1) 72"	
14'	(1) 96" and (1) 72"	
16'	(2) 96"	

FURNISHED BRACKET INFORMATION	
Total Component Length	Adjustable Brackets Supplied
4'	2
6'	2
8'	2
10'	4
12'	4
14'	4
16'	4
Standard Adjustable Bracket 	